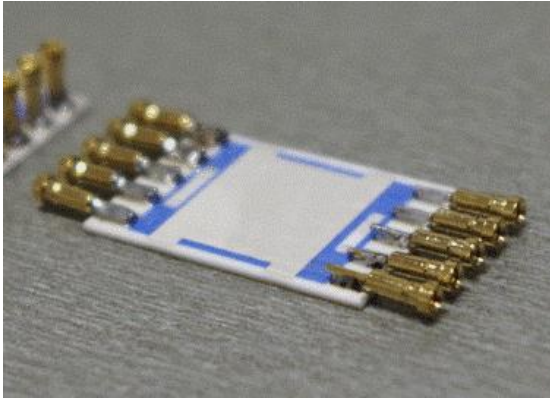


PRODUCT DATASHEET - 005**DESIGNATION: Chip expander****TYPE: CE6, CE7****Substrate**

Dimension: 13 x 20 mm

Material: Al₂O₃**Terminals**

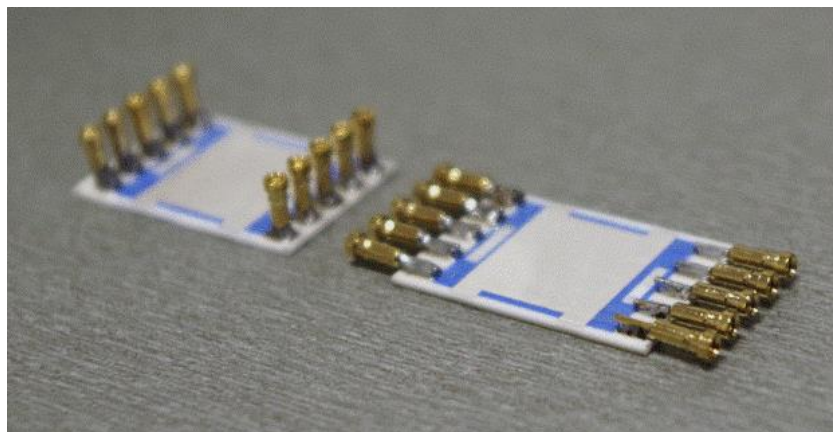
Usable terminals: 6 (+2)

Temp. Measur. : 2

Heating element: 2

DESCRIPTION:

Special chip expander (SCE1) is designed to connect experimental chip and structures to a measuring devices and evaluation boards by gold plated sip socket screw pins. These expanders contains heating resistor layer on the top side (under pad for chip) which allows heating of the expander in the range from ambient temperature up to 120 °C. Temperature measurement is performed by using an open semiconductor PN junction placed on the expander base. The number of usable terminals depends on whether temperature measurement is required. We can encapsulate chip by HYSOL epoxy. Maximum number of usable terminals is eight. Two terminals are fixedly used for heating element. It is possible to solder gold plated sip socket screw pins perpendicular to the base of the expander.

AVAILABLE VARIANTS:**CE6****CE7**